

TECHNICAL BULLETIN



FUJI HEAVY INDUSTRIES LTD.

JCAB/ APPROVED/

HEAD OFFICE ; SUBARU BLDG.
SHINJUKU, TOKYO, JAPAN

NO. 200-017 DATE 62-2-26 (SUPERSEDES NO.)
REV. DATE (SUPERSEDES NO.)
REASON

1. SUBJECT : Canopy Rear Roller Rail Wear, Repair of
2. AIRCRAFT AFFECTED : FA-200 S/N 12 through 214
3. PRIORITY : Optional
4. REASON : To provide a repair scheme for wear at the canopy rear roller.
5. DESCRIPTION : If repair is required by inspection, rework canopy rail worn area and install additional roller.
6. ACCOMPLISHMENT : At customer's option
7. APPROVAL : Not required
8. PARTS REQUIRED : If additional roller is required, the following parts are required per side.

No.	Part Number	Nomenclature	Quantity
1	200-420003-007	Roller	1
2	200-420004-003	Bushing	1
3	200-420005-235	Lock Plate	1
4	NAS222-12	Screw	1
5	MS20470 AD4	Rivet	2

9. SPECIAL TOOL : None required
10. WEIGHT AND BALANCE: Negligible
11. REFERENCE : Not applicable
12. ACCOMPLISHMENT INSTRUCTIONS:
 - (1) Fully close canopy.
 - (2) With a suitable marking pen, mark the portion of canopy rail which is aligned with canopy rear roller position.
 - (3) Fully open canopy.
 - (4) Inspect the marked portion of canopy rail for wear. (see figure 1.) If wear is found, remove canopy in accordance with FA-200 Service Manual, Paragraph 7-4-1. Rework the worn area smoothly as indicated on Figure 1. (Remove material minimum as required.)

AIRCRAFT DIVISION

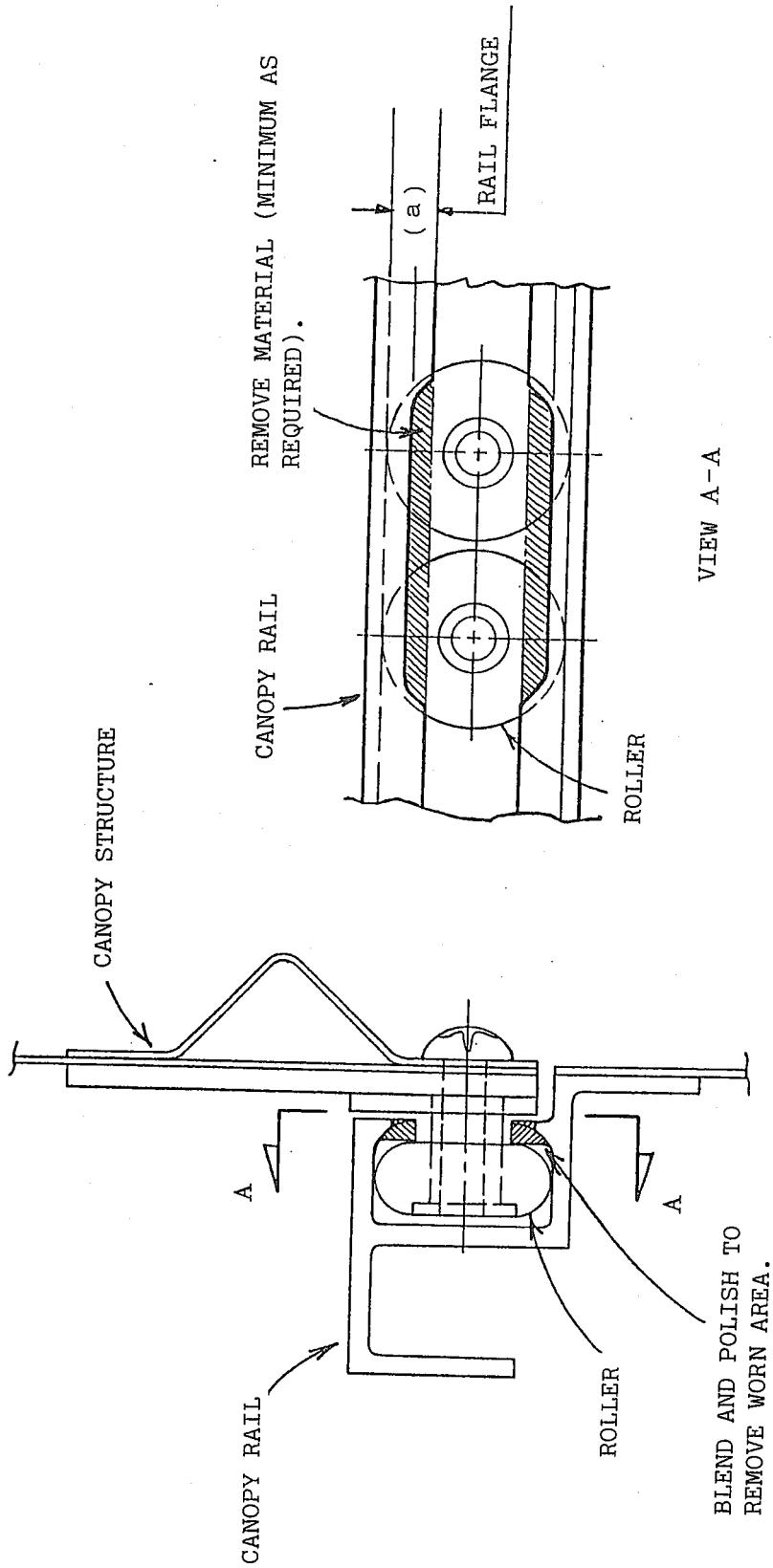
1-11 YOUNAN 1 CHOME, UTSUNOMIYA TOCHIGI JAPAN 〒320
TEL 0286 (58) 1111 TELEX 3522 176

TECHNICAL BULLETIN

PAGE 1 OF 4

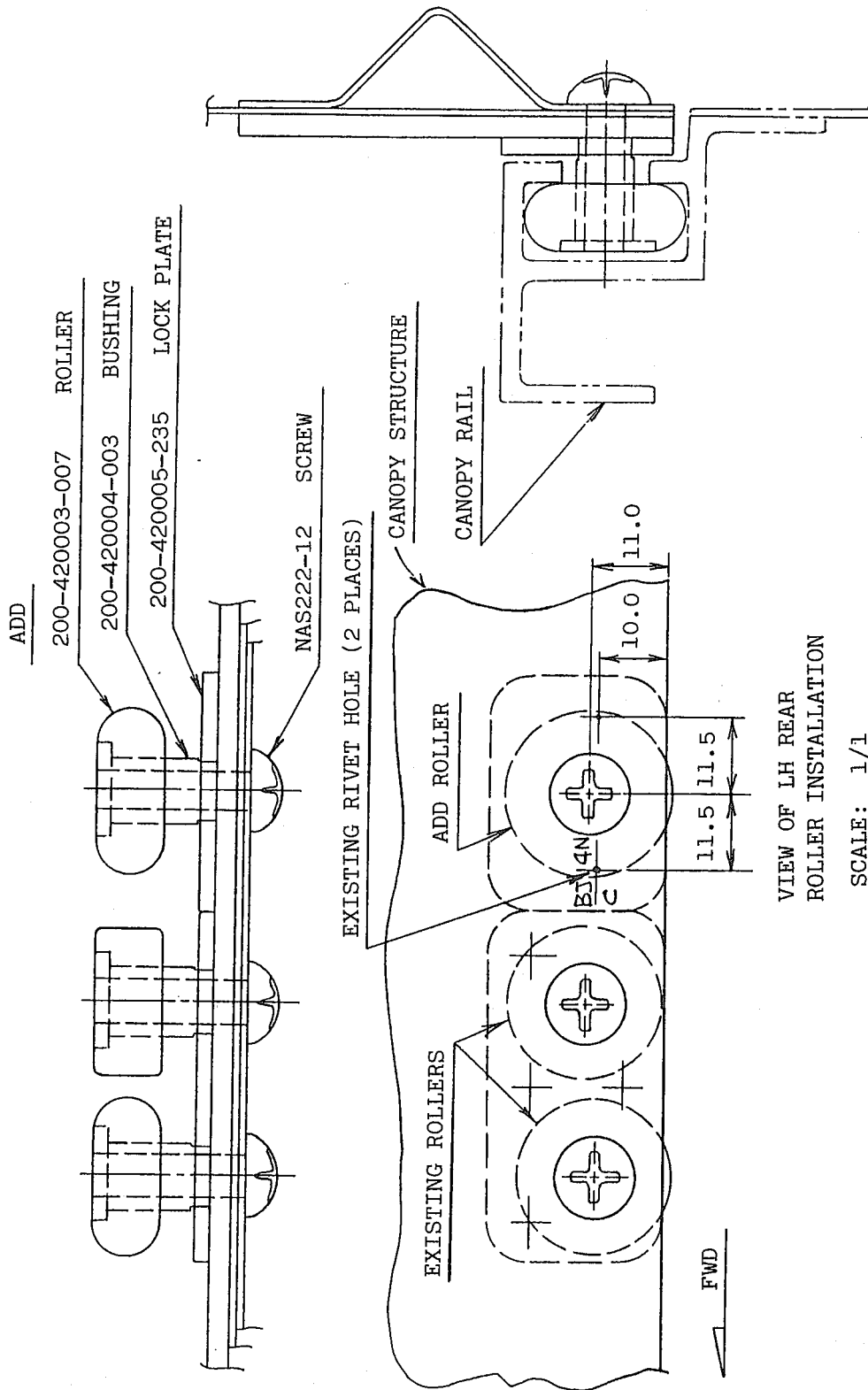
- (5) If rail flange material (dimension "a" on Figure 1, View A-A) is completely removed, after rework of excessively worn area, additional installation of roller is required in accordance with the following steps (6) through (8). Even if material removed is less than the above, add roller if lateral (axial) play is excessive.
- (6) Attach lockplate (200-420005-235) to canopy as shown in Figure 2.
- (7) Remove canopy rail stop. Install bushing (200-420004-003) into roller (200-420003-007). Engage the bushing and roller in rail, and then reinstall rail stop.
- (8) Reinstall canopy in accordance with FA-200 Service Manual, Paragraph 7-4-2. Secure the added roller in the same manner as the existing two rollers.

13. COMPLIANCE RECORD: After repair has been completed, make entries in aircraft log book.



(LH REAR ROLLER INSTALLATION)
 (VIEW LOOKING AFT.)

FIGURE 1. REWORK OF WEAR AT CANOPY REAR ROLLER RAIL



VIEW OF LH REAR
ROLLER INSTALLATION

SCALE: 1/1
DIMENSIONS: mm

FIGURE 2. ADDITION OF ROLLER TO CANOPY