

- 3) Peel off the floor carpet P/N 200-534107.
- 4) Remove existing lap belts.
- 5) Remove existing four rivets on the spar that interfere installation of plate P/N 200-534420-3/-4. Attach plate to spar with four rivets MS20426AD5 installed flush on outside as shown in Fig. 2.
- 6) Fasten P/N 200-534420-5/-6 to main spar with existing bolts.
- 7) Install each reel with four screws.
- 8) Trim the cover P/N 200-430067-3/-4 and floor carpet as shown in Fig. 2, then install the trimmed cover and carpet in place.

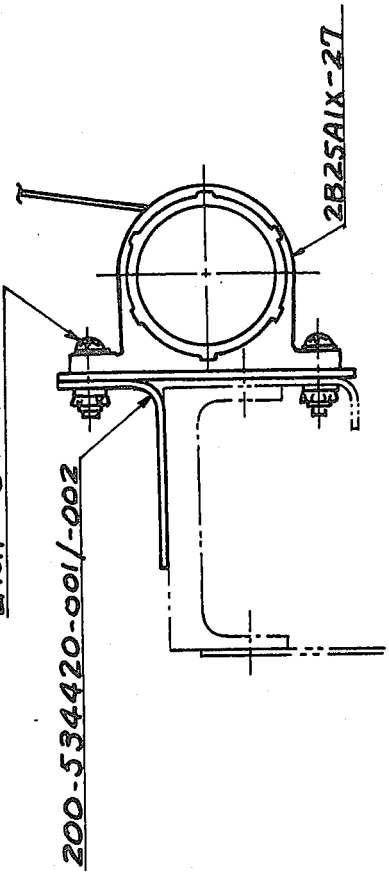
B. Installation of Reinforce Stiffeners—Seat Structure (See Fig. 3)

- 1) Remove cloth assy and cushion assy from seat backrest.
- 2) Locate stiffeners P/N 200-534285-141/-142 as shown in Fig. 3 and drill 1/8 inch holes from stiffeners.
- 3) Trim stiffeners as required to prevent interference with the screw installed on seat back cover.
- 4) Install stiffeners on seat structure with NAS1738B4-3 or equivalent blind (Cherry) rivets.
- 5) Install cushion and cloth assy.

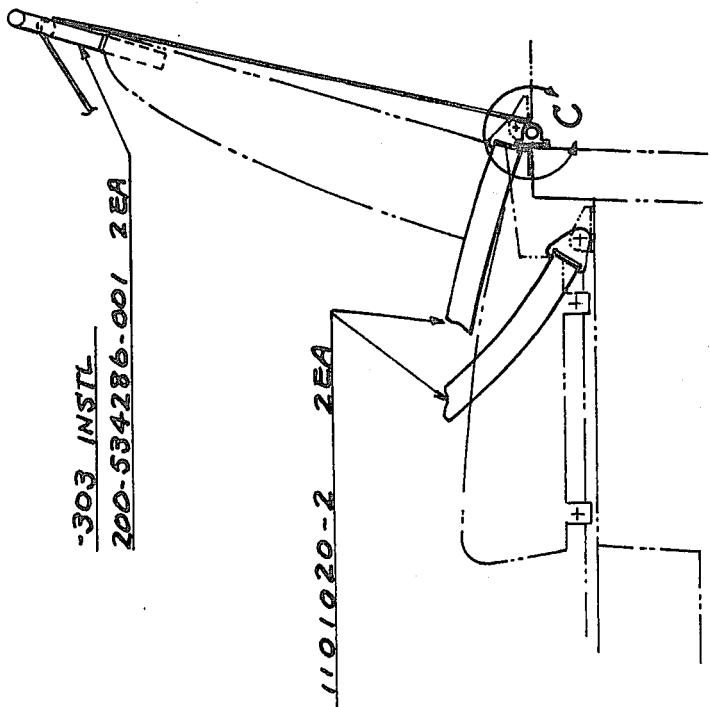
C. Finish

- 1) Install P/N 200-534286-001 bracket assy for shoulder harness.
- 2) Install lap belts.
- 3) Install front seats.

NAS221-12 1EA
 MS21042L3 1EA
 AN960D10 1EA
 AN960D10L 1EA
 EACH 8 PLACES



DETAIL C

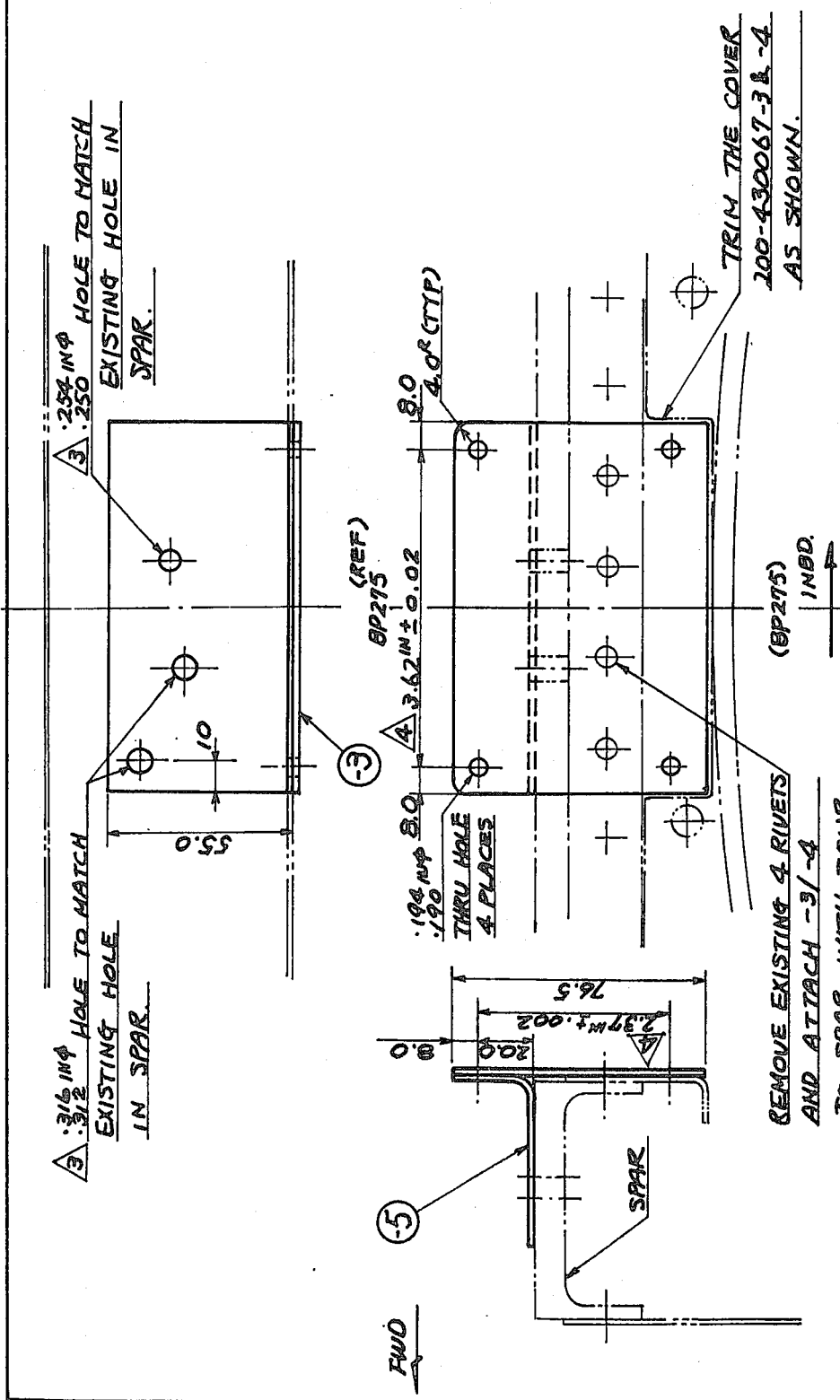


-303 INSTL

2. INSTL -303 IS APPLIED S/N 101~243 EXCEPT NOTE 1.
 1. THIS ATS IS APPLICABLE TO FA 200 S/N 12 ~ 243
 EXCEPT 214, 231, 232, 235, AND 236.

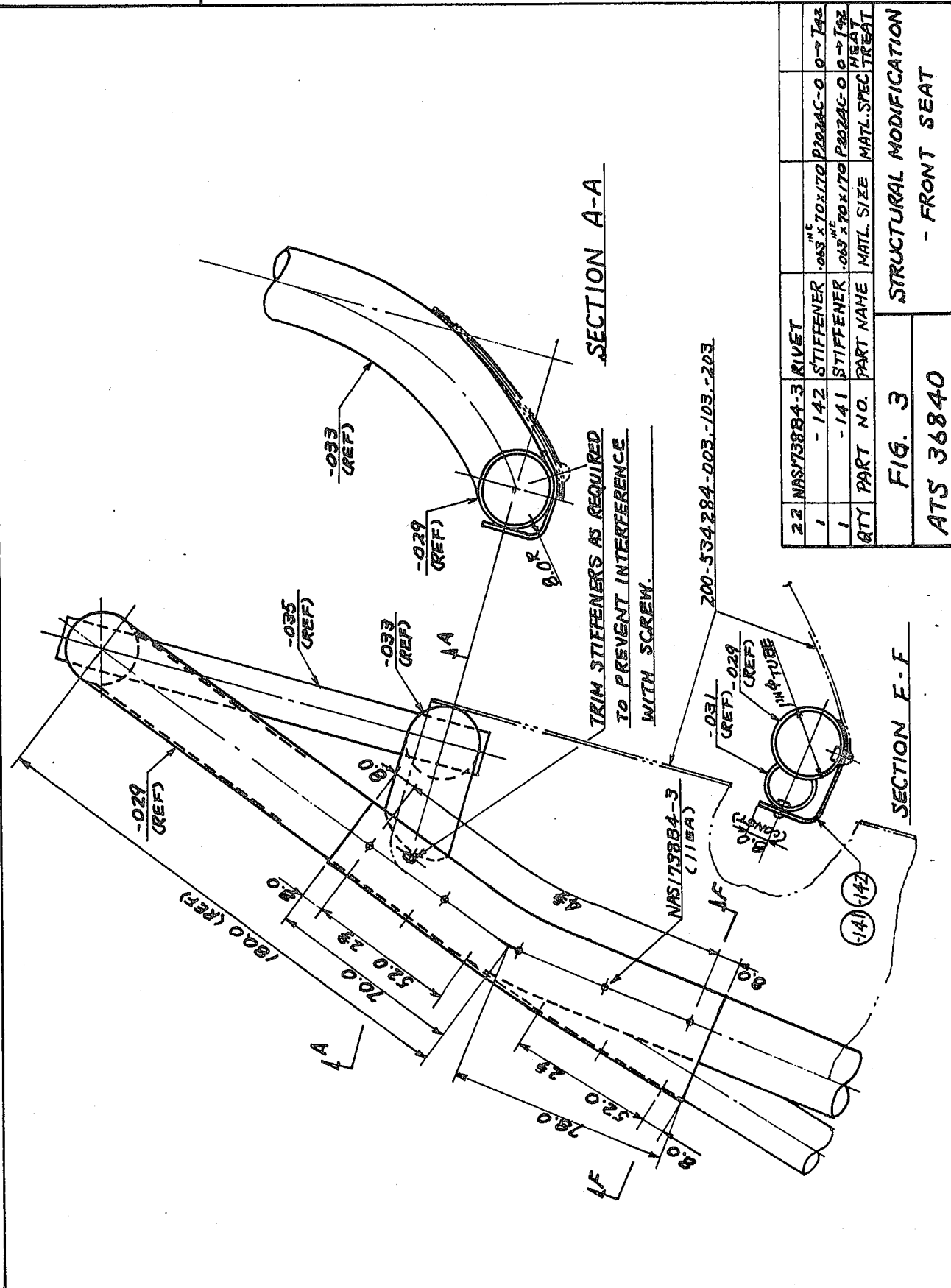
NOTES!

2	1101020-2	SAFETY BELT	PACIFIC SCIENTIFIC CO
2	2B25AIX-27	SHOULDER HARNESS WITH INERTIA REAL "	
8	MS21042L3	NUT	
8	NAS221-12	SCREW	
8	AN960D10L	WASHER	
1	200-534420-002	ANCHOR INSTL - SHOULDER HARNESS - FRONT SEAT	
1	200-534420-001	ANCHOR INSTL - SHOULDER HARNESS - FRONT SEAT	
2	200-53486-001	BRACKET ASSY - SHOULDER HARNESS - FRONT SEAT	
QTY	PART No.	PART	NAME
	FIG. 1		SHOULDER HARNESS
	ATS 36829		INSTL.



AR	MS20426AD5	RIVET		
1	-6	BRACKET	.063 IN ² 20X110	P2024C-T3
1	-5	BRACKET	.063 IN ² 20X110	P2024C-T3
1	-4	PLATE	.080 IN ² 20X110	P2024C-T3
1	-3	PLATE	.080 IN ² 20X110	P2024C-T3
	-2	INSTL		
	-1	INSTL		
QTY	PART NO.	PART NAME	STOCK SIZE	MATL. SPEC.
	Fig. 2	ANCHOR INSTL - SHOULDER HARNESS FRONT SEAT		
200-534420				

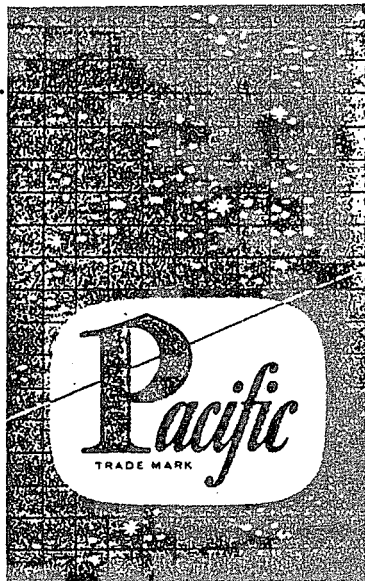
A TO MATCH PACIFIC SCIENTIFIC CO. 2025A1X-27 INERTIA REEL.
A TIGHTEN THE SPAR AND -5/-6 BRACKETS WITH EXISTING BOLTS.
2 PAINT WITH BLACK LACQUER.
1 THIS DWG IS APPLICABLE TO FA-200 5/N NOTES: 12-243 EXCEPT 214, 231, 232, 235 AND 236.



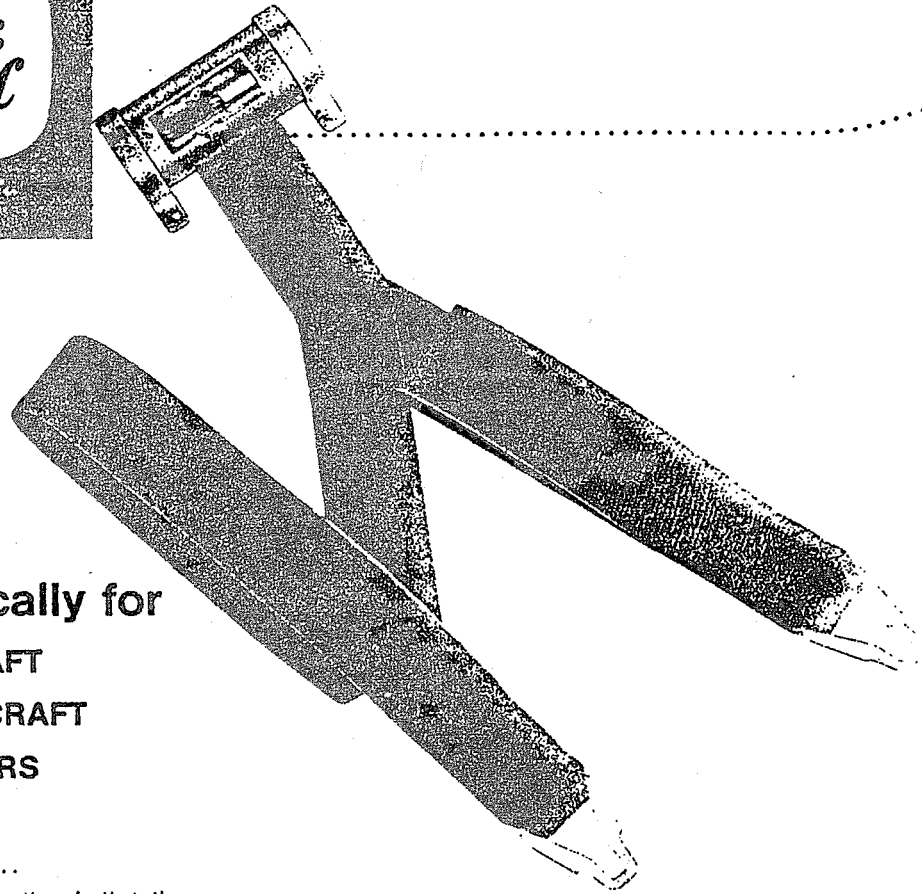
QTY	PART NO.	PART NAME	MATL. SIZE	MATL. SPEC.	TREAT.
22	NAS13884-3	RIVET			
1	- 142	STIFFENER	.043" x .70 x .170	P2024C-0	0 → 142
1	- 141	STIFFENER	.069" x .70 x .170	P2024C-0	0 → 142

STRUCTURAL MODIFICATION
- FRONT SEAT

FIG. 3
ATS 36840



Reel-O-Matic Safety Harness



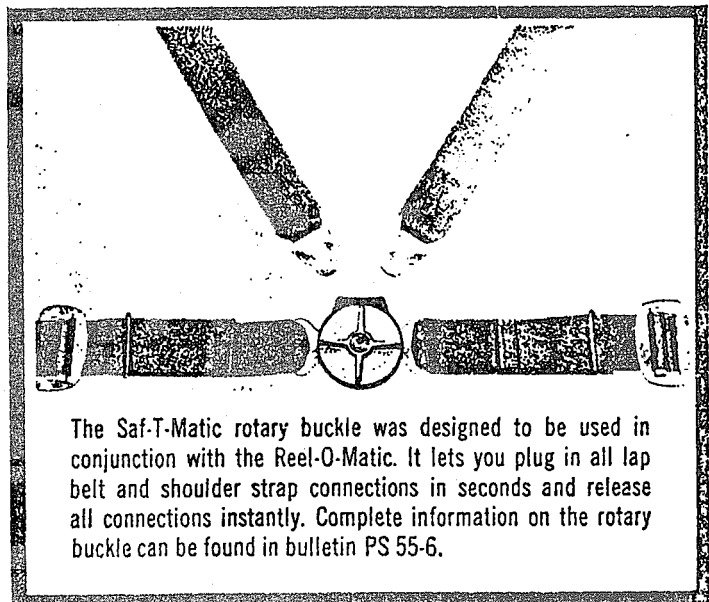
Designed specifically for
PRIVATE AIRCRAFT
COMMERCIAL AIRCRAFT
ALL HELICOPTERS

Don't rely on lap belt protection alone

Most enjoy the same safety protection in the air that the military have used for years. This protection is available at a surprisingly low cost and installation is simple.

The Reel-O-Matic gives you all of the advantages of a shoulder harness but without restriction except in an emergency. This means with shoulder straps on, you can move about easily, but should an emergency or turbulence occur that tends to throw you or your passengers from the seat in any direction, the Reel-O-Matic instantly and automatically locks you safely in place. When the emergency has passed the Reel-O-Matic automatically lets you resume normal unrestricted movement. When not in use the lightweight shoulder straps are retracted out of the way by the Reel-O-Matic.

The Reel-O-Matic is completely mechanical — needs no lubrication, and can be mounted in any position with only four bolts.



The Saf-T-Matic rotary buckle was designed to be used in conjunction with the Reel-O-Matic. It lets you plug in all lap belt and shoulder strap connections in seconds and release all connections instantly. Complete information on the rotary buckle can be found in bulletin PS 55-6.