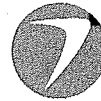


SERVICE BULLETIN



FUJI HEAVY INDUSTRIES LTD.

JCAB APPROVED

HEAD OFFICE ; SUBARU BLDG.
SHINJUKU, TOKYO, JAPAN

NO. 200-007

DATE 61-8-8

(SUPERSEDES NO.)

REV.

DATE

(SUPERSEDES NO.)

REASON

1. SUBJECT : Addition of Stops to Fuel Selector Valve Cover Assy
2. AIRCRAFT AFFECTED : FA200 aircraft S/N 101 and sub, and aircraft (prior to S/N 101) with SB FAS-032 incorporated.
3. PRIORITY : Mandatory.
4. REASON : There has been an instance reported whereby fuel flowed outboard from the vent system during mooring. This was caused by siphon effect, since placing the fuel selector valve in "PROHIBITED POSITION" allowed free fuel flow between the left and right fuel tanks. This bulletin specifies installation of stops to prevent the fuel selector valve from being inadvertently placed in "PROHIBITED POSITION".
5. DESCRIPTION : Install two stops on the flange assy of the fuel selector valve handle assy in accordance with paragraphs 6 and 12.
6. ACCOMPLISHMENT : Within the next 50 hours of operation after receipt of this bulletin.
7. APPROVAL : JCAB approval (No-Tokyo-61-013)
8. PARTS REQUIRED : The following parts to accomplish this bulletin will be supplied at no cost to the operator of each affected airplane.

<u>P/N</u>	<u>NOMENCLATURE</u>	<u>QTY</u>
200-924217-3	STOP	2
MS35206-227	SCREW	2
AN960D6	WASHER	2

9. SPECIAL TOOL : None required.
10. WHIGHT AND BALANCE : Not affected.
11. REFERENCE : None.

AIRCRAFT DIVISION

1-11 YOUNAN 1 CHOME, UTSUNOMIYA TOCHIGI JAPAN 〒320
TEL 0286 (58) 1111 TELEX 3522 176

SERVICE BULLETIN 200-007

PAGE 1 OF 3

12. DETAILED INSTRUCTIONS :

- (1) Drill two (2) stop attaching holes as shown on the attached figure 1.

CAUTION

For safety precaution, use hand drill or air drill for drilling. Flange can be easily drilled as it is made of soft alluminum alloy (6061-0).

Take precaution to prevent metal chips (caused by drilling) from sticking to fuel selector valve shaft.

- (2) Make a 12.0 mm (concentric) dia cutout in rubber of inside flange only.
- (3) Install stops with screws and washers as shown on the figure 1.
- (4) Make a log book entry indicating completion of this bulletin.

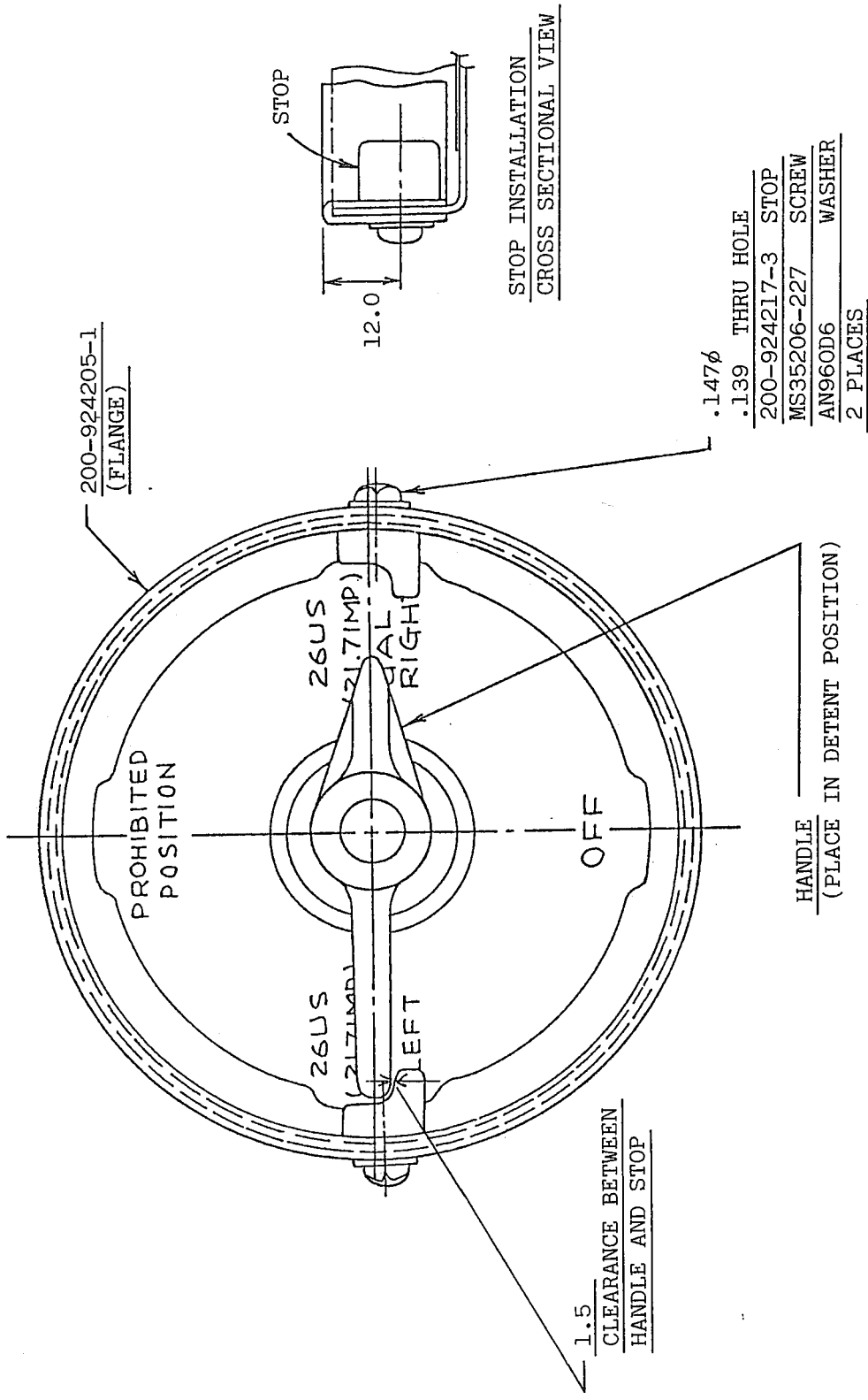


FIGURE 1 INSTALLATION OF STOP