



# SERVICE BULLETIN

FUJI HEAVY INDUSTRIES LTD.

HEAD OFFICE

: SUBARU BLDG,

SHINJUKU, TOKYO, JAPAN

NO : FAS-063

DATE : November 25, 1971

1. SUBJECT : Change of Propeller Spinner Installing Method.
2. AIRCRAFT AFFECTED : FA-200-180 Series Aircraft, Serial Nos. 1 thru 166.
3. PRIORITY : Desirable.
4. REASON : To provide a new spinner installing method for cylinder attachment change of McCauley propeller model B2D34C53. (See figure 4.)
5. DESCRIPTION : Remove the existing front bulkhead assy of propeller spinner and install a new support as shown in figure 1.
6. ACCOMPLISHMENT : At any time when the propeller cylinder installing method is changed at overhaul, or when a new propeller is installed.
7. APPROVAL : JCAB Approval (NO-TOKYO-33) November 15, 1971.
8. PART REQUIRED : The following parts are required to perform the modification:

PART NO.	PART NAME	QTY
203-960014-003	SUPPORT	1
203-960015-003	SHIM	1
203-960015-005	SHIM	4
NAS679A3W	NUT	4
AN960D10	WASHER	4

FAS - 063

PAGE 1 OF 3

9. SPECIAL TOOL : None required.

10. WEIGHT AND BALANCE: Negligible.

11. REFERENCE : Not applicable.

12. MANHOUR REQUIRED : 1 manhour required.

13. DETAILED INSTRUCTION:

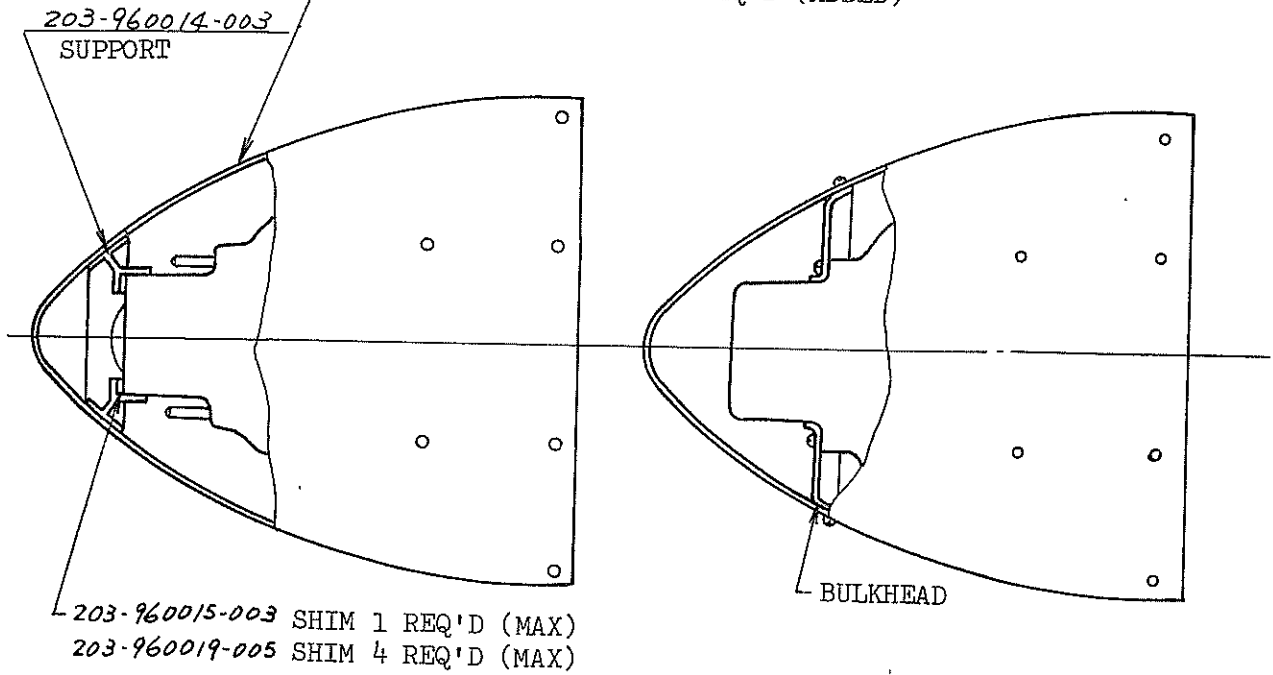
- (1) Remove propeller spinner.
- (2) Remove front bulkhead assy, 203-960013-001, from propeller assy. Discard the removed bulkhead.
- (3) Four screw holes in spinner for front bulkhead attachment are no longer required. Plug these obsolete holes with existing four screw, MS27039-1-08, four washers, AN960-10L, additional four nuts, NAS679A3W, and four washers, AN960D10.
- (4) Temporarily position new support, 203-960014-003, between a spinner and forward end of modified propeller cylinder as illustrated in figure 1. Place shims, 203-960015-003 and -005, as required for adjustment between support and cylinder so that spinner may fit snugly over support and rear bulkhead. Also make sure that spinner attaching holes mate properly with holes in flange of rear bulkhead.
- (5) Install spinner on propeller securely with existing hardware.

14. ADDITIONAL INFORMATION:

- (1) Since the new spinner installing method is also applicable to propeller cylinders which are not modified, it is recommended that this modification be accomplished if replacement of propeller spinner front bulkhead is considered.
- (2) For future procurement of propeller spinners, two types are available as spare parts as follows:
  - a. P/N: 203-960011-003 (With front bulkhead attaching holes)  
To be used with front bulkhead.
  - b. P/N: 203-960011-005 (Without front bulkhead attaching holes)  
To be used with support.

PLUG 4 OBSOLETE HOLES WITH

- MS27039-1-08 SCREW 4 REQ'D (EXISTING)
- AN960-10L WASHER 4 REQ'D (EXISTING)
- NAS679A3W NUT 4 REQ'D (ADDED)
- AN960D10 WASHER 4 REQ'D (ADDED)



PLACE SHIMS AS REQUIRED FOR ADJUSTMENT TO PROVIDE SNUG SEATING OF SUPPORT.

FIGURE 1.  
NEW METHOD - SPINNER INSTALLATION

FIGURE 2.  
EXISTING METHOD - SPINNER INSTALLATION

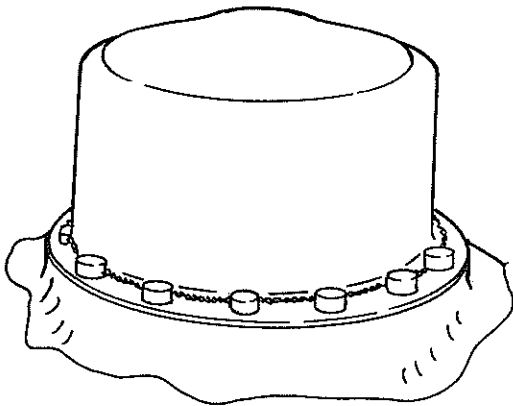


FIGURE 3.  
EXISTING METHOD - CYLINDER ATTACHMENT

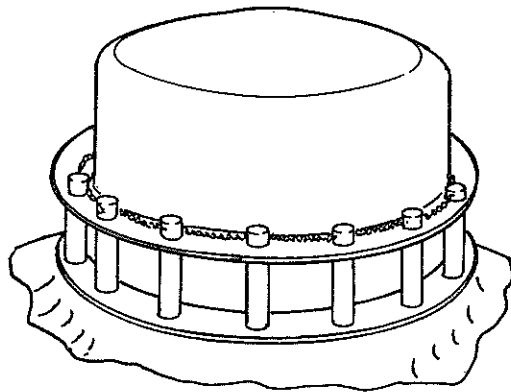


FIGURE 4.  
NEW METHOD - CYLINDER ATTACHMENT