



SERVICE BULLETIN

FUJI HEAVY INDUSTRIES LTD.

HEAD OFFICE

: SUBARU BLDG,
SHINJUKU, TOKYO, JAPAN

NO : FAS-045

DATE : February 15, 1971

1. SUBJECT : Improvement of Rear seat backrest
2. AIRCRAFT AFFECTED : FA-200 Series Serial Nos. 12 thru 100.
3. PRIORITY : Desirable.
4. REASON : To facilitate battery inspection and maintenance Rear seat backrest is improved to "lift up mechanism type."
5. DESCRIPTION : Rear seat backrest assy to be replaced.
6. ACCOMPLISHMENT : Optional.
7. APPROVAL : JCAB Approved.
8. PART REQUIRED : The following parts are required to perform the rework.

PART NO.	PART NAME	QTY	REMARKS.
200-534275-001	BACKREST ASSY-REAR SEAT	1	BLACK (OPTION).
200-534275-101	BACKREST ASSY-REAR SEAT	1	RED (OPTION).
200-431006B-013	BRACKET	1	
MS20470AD4	RIVET	3	
0.45 ^t X 50 X 50	VINYL LEATHER	4	BLACK OR RED.
#575	CEMEDINE	AR	

FAS - 045

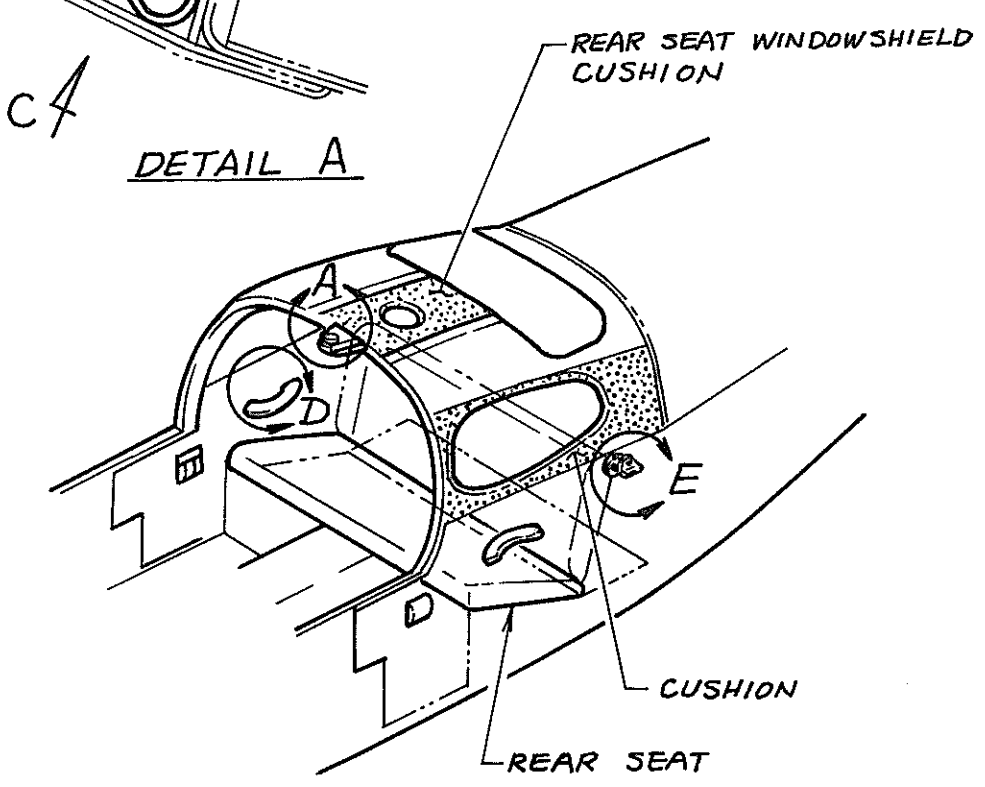
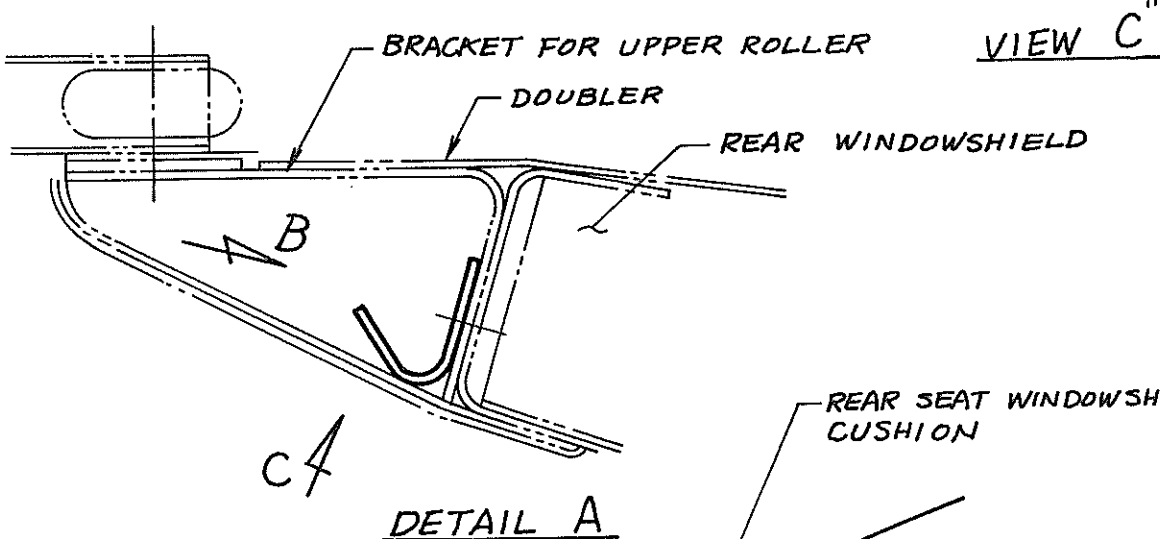
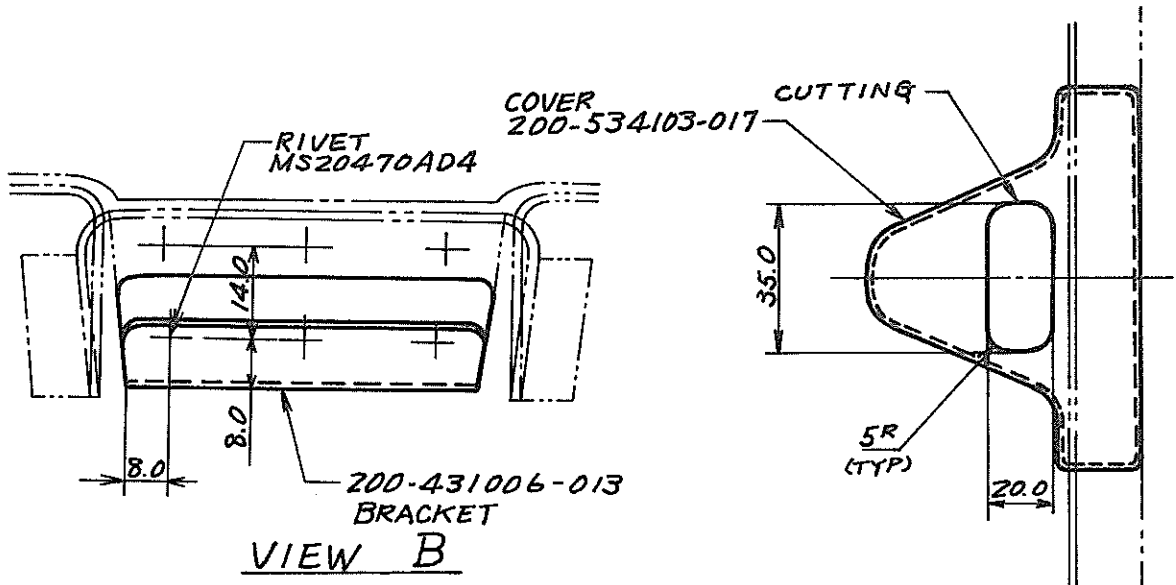
PAGE 1 OF 5

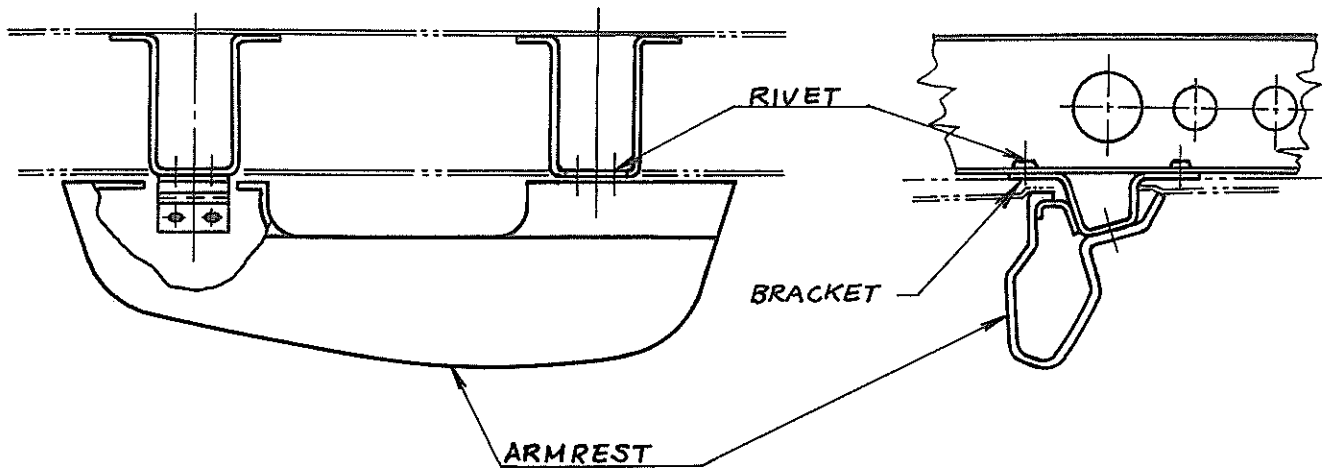
9. SPECIAL TOOL : None required.
10. WEIGHT AND BALANCE : Negligible.
11. REFERENCE : None.
12. MANHOUR REQUIRED : 20 Manhours required.

13. DETAILED INSTRUCTION:

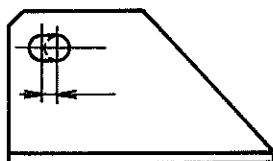
- (1) Remove two bolts, AN4-7A, which attach rear seat backrest, 200-534260-001 or -101. (See Detail E).
- (2) Remove the rear seat backrest, 200-534250-001 or -101.
- (3) Remove two armrest assys and two ash trays.
- (4) Remove the cover of rear windowshield (top, L.H and R.H window) and rear seat L.H and R.H cover.
- (5) Remove the bracket in rear seat armrest. (two of L.H and R.H bracket, P/N: 200-534120-007.) (See Detail D).
- (6) Remove the cushion between rear seat bracket and outer skin.
- (7) Remove the nutplate, attached to rear seat backrest fitting bracket, 200-534275-045 and -046. Move the nutplate position 2mm toward nose direction. (See Detail E').
- (8) Remove the cover, 200-534103-017, which covers upper roller fitting bracket and then cut it. (See View C).
- (9) Remove the cushion of rear windowshield at top, in order to install the bracket, 200-431006-013. Install the bracket, 200-431006-013, to upper roller fitting bracket with three rivets. (View B).
- (10) Adhere the cushion removed in step 6 and step 9 with adhesive (cemedine #575).
- (11) Install the top cover, left hand and right hand window cover and cover for upper roller fitting bracket to the top of rear windowshield.

- (12) Adhere the same leather from rear surface of cover to the place where the armrest attaching bracket in rear seat left hand and right hand covers are removed, with adhesive. (cemedine #575)
- (13) Install rear seat.
- (14) Install new rear seat backrest assy. Insert the washer, 200-534275-051, between backrest assy and bracket when installed. (See Detail E).
- (15) Check operation and adjust the tightness to operate smoothly.



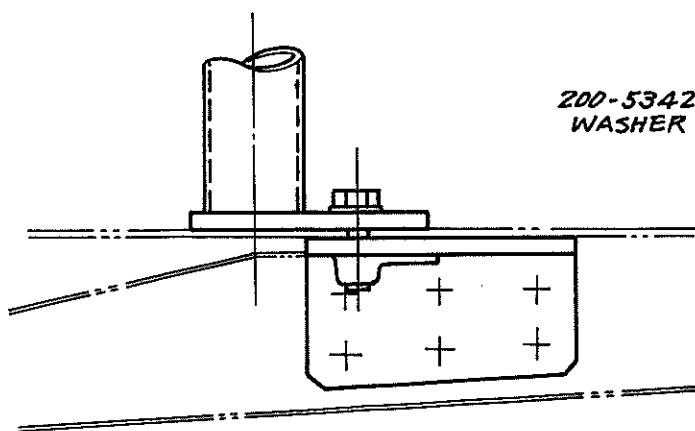


← FRONT DIRECTION OF AIRFRAME

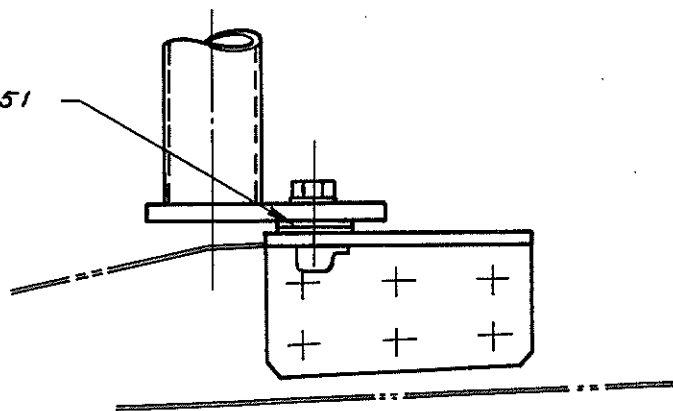


MOVE HOLE POSITION 2^{mm}
TOWARD NOSE DIRECTION

DETAIL E'



BEFORE CHANGE



AFTER CHANGE

200-534275-051
WASHER

BRACKET
200-534275-045
200-534275-046