



SERVICE BULLETIN

FUJI HEAVY INDUSTRIES LTD.

HEAD OFFICE

: SUBARU BLDG,

SHINJUKU, TOKYO, JAPAN

NO : FAS-042

DATE : April 26, 1971

1. SUBJECT : MARKING REVISION: Airspeed Indicator Limit and Other Markings.
2. AIRCRAFT AFFECTED : All FA-200 Series, Serial Nos. 1 thru 100.
3. PRIORITY : Mandatory.
4. REASON : In order to incorporate latest operational rules, marking revision to be made as follows:
 - (1) Revision of airspeed indicator limit marking from 15⁰ flap extended speed to 35⁰ flap extended speed.
 - (2) Addition of design maneuvering speed VA marking.
 - (3) Revision of flap handle indicating speed from CAS to IAS.
 - (4) Revision of baggage shelf marking by adding limit in acrobatic flight.
 - (5) Revision of marking for instrument panel light handling.
 - (6) On 180 HP airplanes, red radial line and yellow arc revised to meet calibrated air speed chart.
5. DESCRIPTION : Incorporate revision of airspeed indicator marking and replacement of related placards.
6. ACCOMPLISHMENT : Immediately upon receipt of this directive.
7. APPROVAL : JCAB Approval (NO-TOKYO-016) April 3, 1971.

FAS - 042

PAGE 1 OF 8

8. PARTS REQUIRED : The following parts are required to perform this directive:

PART NO.	PART NAME	QTY	EFFECTIVE A/C
200-000255-007	PLACARD MAXIMUM BAGGAGE WEIGHT	1	FA-200-160 #1 thru #19 FA-200-180 #1 thru #101
200-000263-021	PLACARD FLAP HANDING	1	#1 thru #101
200-324137-015	PLACARD DEMONSTRATED CROSS WIND	1	FA-200-160
200-324137-017	PLACARD DEMONSTRATED CROSS WIND	1	FA-200-180
200-324156-009	PLACARD CAUTION INSTRUMENT LIGHT	1	Applicable to the air- craft equipped with the above push-in type instrument light.
200-324156-019	PLACARD CAUTION INSTRUMENT LIGHT	1	"
PAINT	FLUORESCENT PAINT LUMINO SIGN NO. 2 GREEN	AR	#1 thru #101
PAINT	FLUORESCENT PAINT LUMINO SIGN NO. 3 RED	AR	#1 thru #101
PAINT	FLUORESCENT PAINT LUMINO SIGN NO. 5 YELLOW	AR	#1 thru #101
	1.2 ^W x 50 ^L CHOPPING MARK TAPE	1	#1 thru #101

9. SPECIAL TOOL : None required.

10. WEIGHT AND BALANCE: Negligible.

11. REFERENCE : None.

12. MANHOUR REQUIRED : Manhour required to perform the directive is trifling.

13. DETAILED INSTRUCTIONS:

13-1. Remove obsolete placards, clean the bonding areas, and install new placards in place.

- (1) Replacement of baggage shelf marking (located at right side aft of rear seat). Applicable to FA-200-160 Serial Nos 1 thru 19, FA-200-180 Serial Nos 1 thru 101.

New Placard.

MAXIMUM BAGGAGE WEIGHT 20Kg OR 44 LBS
BAGGAGE SHELF
NO BAGGAGE IN ACROBATIC FLIGHT

Obsolete Placard (Ref)

FA-200-160 Serial Nos thru 19 and FA-200-180 Serial Nos 1 thru 55.

MAXIMUM BAGGAGE WEIGHT 44 LBS
BAGGAGE SHELF

FA-200-180 Serial Nos 56 thru 101.

MAXIMUM BAGGAGE WEIGHT 20Kg OR 44 LBS
BAGGAGE SHELF

- (2) Replacement of flap handle marking (located on flap handle). Applicable to FA-200 Serial Nos 1 thru 101.

New Placard.

FLAP EXTENDED SPEEDS
15° 139 MPH (120 KNOTS)
25°, 35° 119 MPH (103 KNOTS)

Obsolete Placard (Ref)

Serial Nos 12 thru 101.

FLAP EXTENDED SPEED
15° 122 KNOTS
25°, 35° 104 KNOTS

- (3) Remove demonstrated crosswind speed placard located adjacent to airspeed indicator on instrument panel left side, and install design maneuvering speed VA placard in place.

New Placard (FA-200-160 Nos. 1 thru 101)

THE DESIGN MANEUVERING SPEED VA
NORMAL AND UTILITY CATEGORY 134 MPH (116 KNOTS)
ACROBATIC CATEGORY 148 MPH (128 KNOTS)
THE DEMONSTRATED CROSSWIND 15 KNOTS

New Placard (FA-200-180 Nos 1 thru 101)

THE DESIGN MANEUVERING SPEED VA
NORMAL AND UTILITY CATEGORY 143 MPH (124 KNOTS)
ACROBATIC CATEGORY 154 MPH (134 KNOTS)
THE DEMONSTRATED CROSSWIND 15 KNOTS

Obsolete Placard (FA-200-160, FA-200-180)

THE DEMONSTRATED CROSSWIND
15 KNOTS

- (4) Replacement of instrument panel light marking (located on the arm of push-in type instrument panel light). Applicable to the aircraft equipped with the above push-in type instrument light.

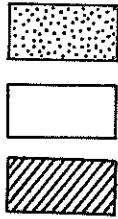
New Placard

BEFORE TAKE-OFF OR LANDING PUSH THIS IN

Obsolete Placard (Ref)

BEFORE LANDING PUSH THIS IN

- 13-2. Revision of airspeed indicator flap extended speed limit. Remove white paint on the white arc, and apply green paint on the area as shown in the following figure.



White Arc
Green Arc
Yellow Arc

13-2A

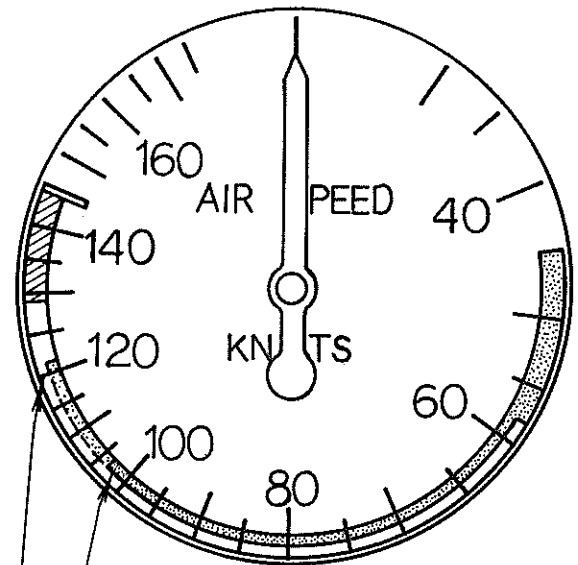
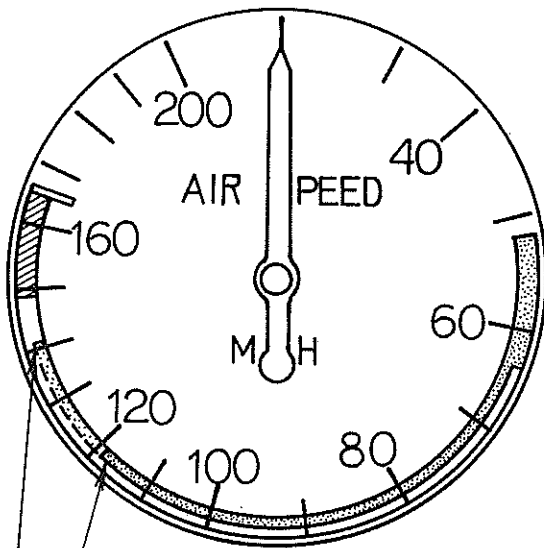
CAUTION

Use care during removal of white paint to prevent damage to the tape bonded to the glass surface.

(1) FA-200-160 Nos. 1 thru 101.

MPH Calibration

KNOTS Calibration



13-2B
(NOW)

119 MPH (White Arc Upper Limit)
Remove white paint on the white arc range of 119 to 141 MPH, and apply green paint on the area instead.

(WAS)

141 MPH (White Arc Upper Limit)

13-2C
(NOW)

103 KNOTS (White Arc Upper Limit)
Remove white paint on the white arc range of 103 to 122 KNOTS, and apply green paint on the area instead.

(WAS)

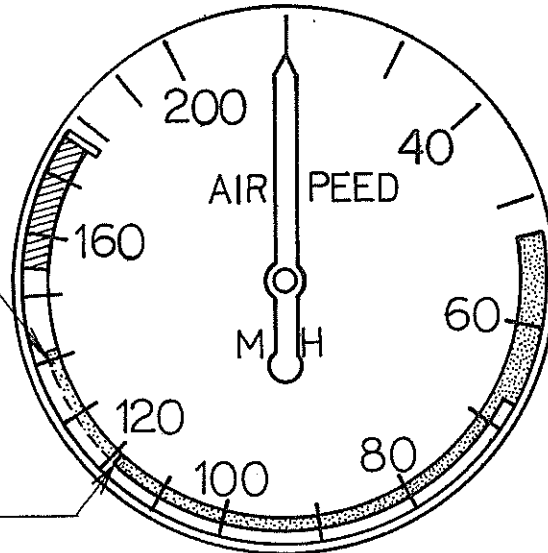
122 KNOTS (White Arc Upper Limit)

(2) FA-200-180 Nos. 1 thru 101.

MPH Calibration

(WAS)

141 MPH (White Arc Upper Limit)



(NOW)

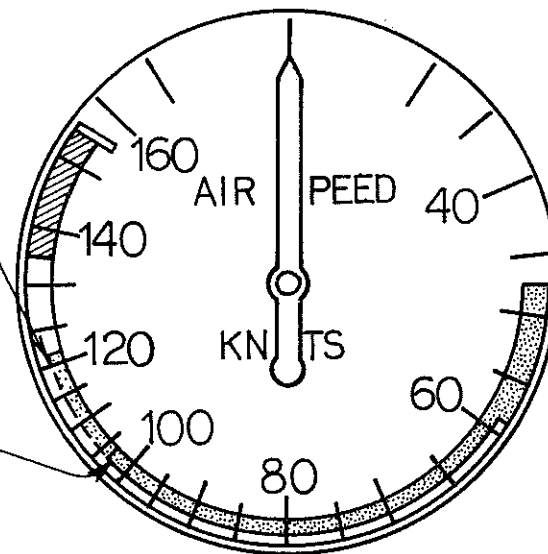
119 MPH (White Arc Upper Limit)

Remove white paint on the white arc range of 119 to 141 MPH, and apply green paint on the area instead.

KNOTS Calibration

(WAS)

122 KNOTS (White Arc Upper Limit)



(NOW)

103 KNOTS (White Arc Upper Limit)

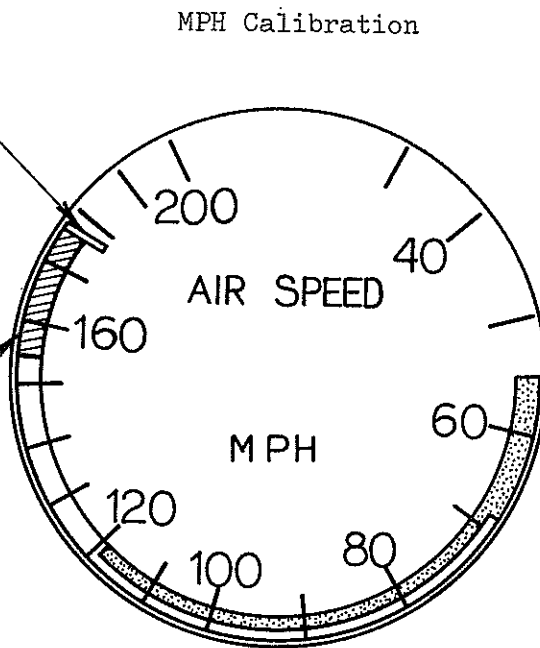
Remove white paint on the white arc range of 103 to 122 KNOTS, and apply green paint on the area instead.

13-3. Revision of such limit markings of airspeed indicator as red radial line, yellow and green arcs, as shown below.

(1) FA-200-180 Serial Nos. 1 thru 101.

13-3A

Revise red line from 179 MPH to 178 MPH.
Remove existing red line at 179 MPH, and also remove upper limit of yellow arc to 178 MPH. Attach 6mm long chopping mark tape to the new position. After bonding, apply *red paint on the tape.



13-3B

(NOW) 154 to 178 MPH Yellow Arc
(resulting from the above red line revision)

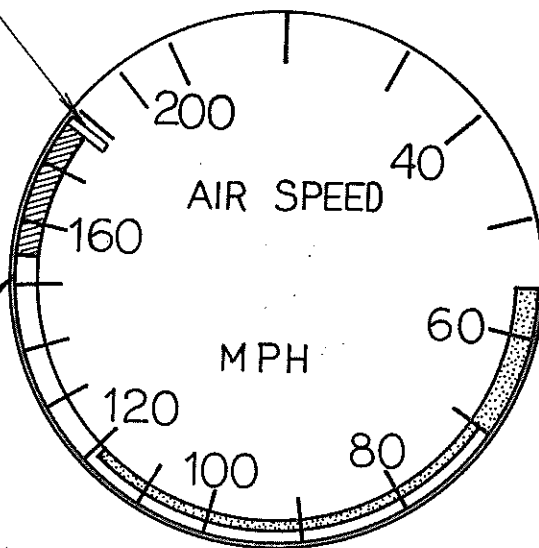
(WAS) 154 to 179 MPH Yellow Arc.

(2) FA-200-180 Serial Nos. 1 thru 11.

13-3C

Revise red line from 180 MPH to 179 MPH. Remove existing red line at 180 MPH, and also remove upper limit of yellow arc to 179 MPH. Attach 6mm long copping mark tape to the new position. After bonding, apply red paint on the tape.

MPH Calibration



13-3D

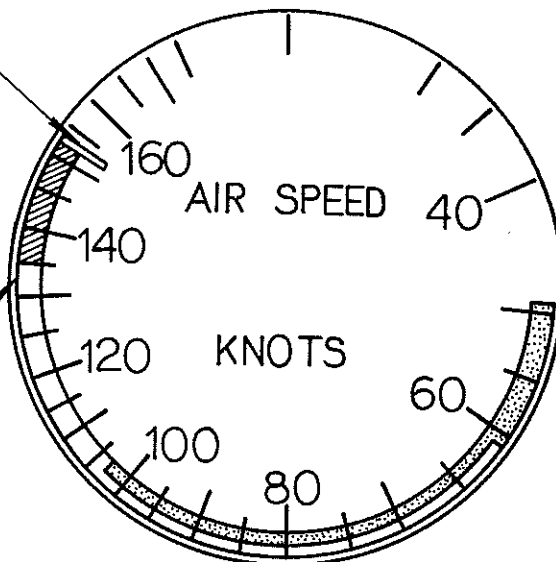
(NOW) 155 to 179 MPH Yellow Arc (resulting from the above red line revision)

(WAS) 155 to 180 MPH Yellow Arc.

13-3E

Revise red line from 156 KNOT to 155 KNOT. Remove existing red line at 156 KNOT, and also remove upper limit of yellow arc to 155 KNOT. Attach 6mm long chopping mark tape to the new position. After bonding, apply red paint on the tape.

KNOT Calibration



13-3F

(NOW) 135 to 155 KNOT Yellow Arc (resulting from the above red line revision)

(WAS) 135 to 155 KNOT Yellow Arc.