



# FIELD SERVICE NEWS

FUJI HEAVY INDUSTRIES LTD.

HEAD OFFICE

: SUBARU BLDG.

SHINJUKU, TOKYO, JAPAN

NO : FAN-029

DATE : May 7, 1973



## INSTALLATION METHOD

FOR

MAGNETIC COMPASS P/N C-2300-L4I

The subject magnetic compass, manufactured by Airpath Instrument Company, has been adopted as an alternate part for the magnetic compass, P/N MC-5. Since these two instruments differ in installation method, the following information has been prepared for reference when the MC-5 magnetic compass is replaced with the C-2300-L4I compass.

PART I : Aircraft with the magnetic compass attaching bracket, P/N 200-324166-001, installed (see figure 1)

1. Remove the radio rack cover.
2. If two radios are installed, remove the upper radion and radio attaching mount.
3. Remove instrument light assy (200-364157-001) from magnetic compass (MC-5). (Remove tip (32445) at the back of the instrument panel to disconnect harness.)
4. Remove attaching hardware and remove magnetic compass (MC-5). Of the hardware removed, discard four nuts (NAS487-13), four washers (AN960D6L) and two screws (MS24693-B32 or AN1507B632R16); retain two screws (MS35214-31) and four adjusting washers (AN960D6) for reuse.
5. By loosening four attaching screws (F-0520-503), move compass attaching bracket (200-324166-001) afterward to provide clearance for installation of magnetic compass (C-2300-L4I).

FAN - 029

PAGE 1 OF 5

6. Replace and reinstall the above bracket in its original position, and secure the C-2300-L4I magnetic compass with four screws (MS35214-31). (Two screws to be reused and the remaining two added.) Use four washers (AN960D6) as required for compass correction.

NOTE

In the following step 7, it is necessary to attach tip (32445) to the end of one wire of the compass instrument light and terminal (FVD-125-4) to the end of the other wire. Also cut wires if necessary.

7. Install the wires of the compass instrument light through two grommets (MS35489-4S), and connect the positive tip (32445) to the wiring removed in the preceding step 3. Also attach the negative terminal (FVD-125-4) to the nutplate as shown in figure 1, using screw (MS35206-245), washer (AN960D8) and washer (AN935-8).
8. Check the instrument light for lightening.
9. Reverse the preceding steps (2) and (1) to reinstall the removed parts.
10. Check on a compass rose.
11. Parts required for accomplishment of this installation:

Part Number	Nomenclature	Qty
C-2300-L4I	Magnetic Compass	1
32445	Tip	1
FVD-125-4	Terminal	1
MS35206-245	Screw	1
AN960D8	Washer	1
AN935-8	Washer	1
MS35214-31	Screw	2

PART II : Aircraft with the magnetic compass attaching bracket, P/N 200-324169-003, installed (see figure 2)

1. Remove the radio rack cover.
2. If two radios are installed, remove the upper radio and radio attaching mount.

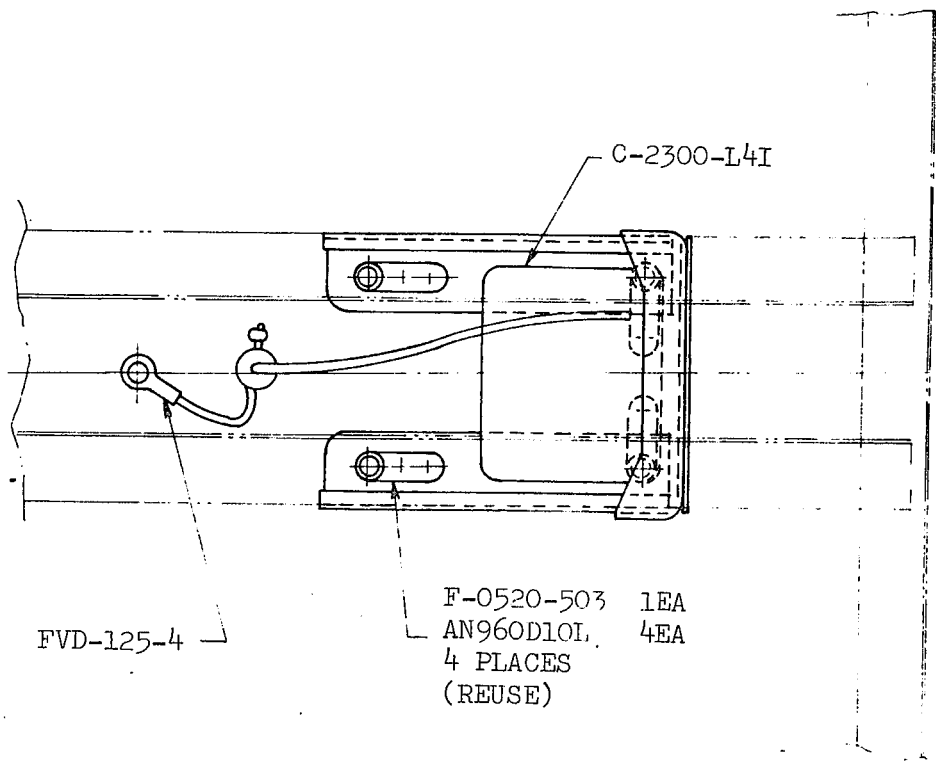
3. Remove instrument light assy (200-364157-001) from magnetic compass (MC-5). (Remove tip (32445) at the back of the instrument panel to disconnect harness.)
4. Remove attaching hardware and remove magnetic compass (MC-5). Of the parts removed, discard plate (200-324165-015), four nuts (NAS487-13) and two screws (MS24693-B32); retain two screw (MS35214-31) and four adjusting washers (AN960D6) for reuse.
5. Attach the C-2300-L4I magnetic compass, together with compass card case (200-324167-011), to the bracket with four screws (MS35214-31). (Two screws to be reused and the remaining two added.) Use four washers (AN960D6) as required for compass correction.

NOTE

In the following step 6, it is necessary to attach tip (32445) to the end of one wire of the compass instrument light and terminal (FVD-125-4) to the end of the other wire. Also cut wires if necessary.

6. Install the wires of the compass instrument light through two grommets (MS35489-4S), and connect the positive tip (32445) to the wiring removed in the preceding step 3. Also attach the negative terminal (FVD-125-4) to the nutplate as shown in figure 2, using screw (MS35206-245), washer (AN960D8) and washer (AN935-8).
7. Check the instrument light lightening.
8. Reverse the preceding steps (2) and (1) to reinstall the removed parts.
9. Check on a compass rose.
10. Parts required for accomplishment of this installation:

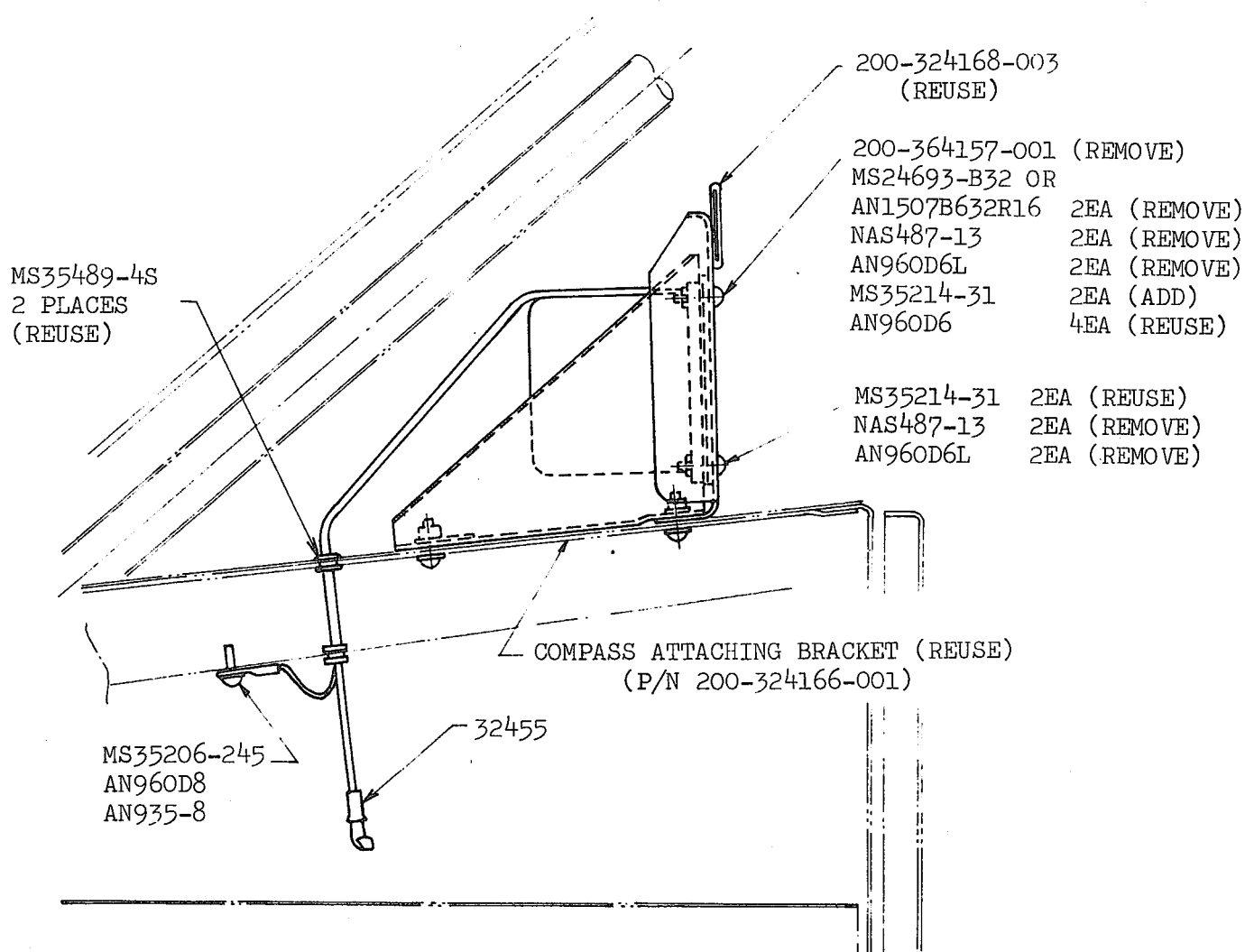
Part Number	Nomenclature	Qty
C-2300-L4I	Magnetic Compass	1
32445	Tip	1
FVD-125-4	Terminal	1
MS35206-245	Screw	1
AN960D8	Washer	1
AN935-8	Washer	1
MS35214-31	Screw	2



FVD-125-4

C-2300-L4I

F-0520-503 1EA  
 AN960D10L 4EA  
 4 PLACES  
 (REUSE)



MS35489-4S  
 2 PLACES  
 (REUSE)

200-324168-003  
 (REUSE)

200-364157-001 (REMOVE)  
 MS24693-B32 OR  
 AN1507B632R16 2EA (REMOVE)  
 NAS487-13 2EA (REMOVE)  
 AN960D6L 2EA (REMOVE)  
 MS35214-31 2EA (ADD)  
 AN960D6 4EA (REUSE)

MS35214-31 2EA (REUSE)  
 NAS487-13 2EA (REMOVE)  
 AN960D6L 2EA (REMOVE)

COMPASS ATTACHING BRACKET (REUSE)  
 (P/N 200-324166-001)

MS35206-245  
 AN960D8  
 AN935-8

32455

FIGURE 1. INSTALLATION OF C-2300-L4I MAGNETIC COMPASS (REFER TO PART I)

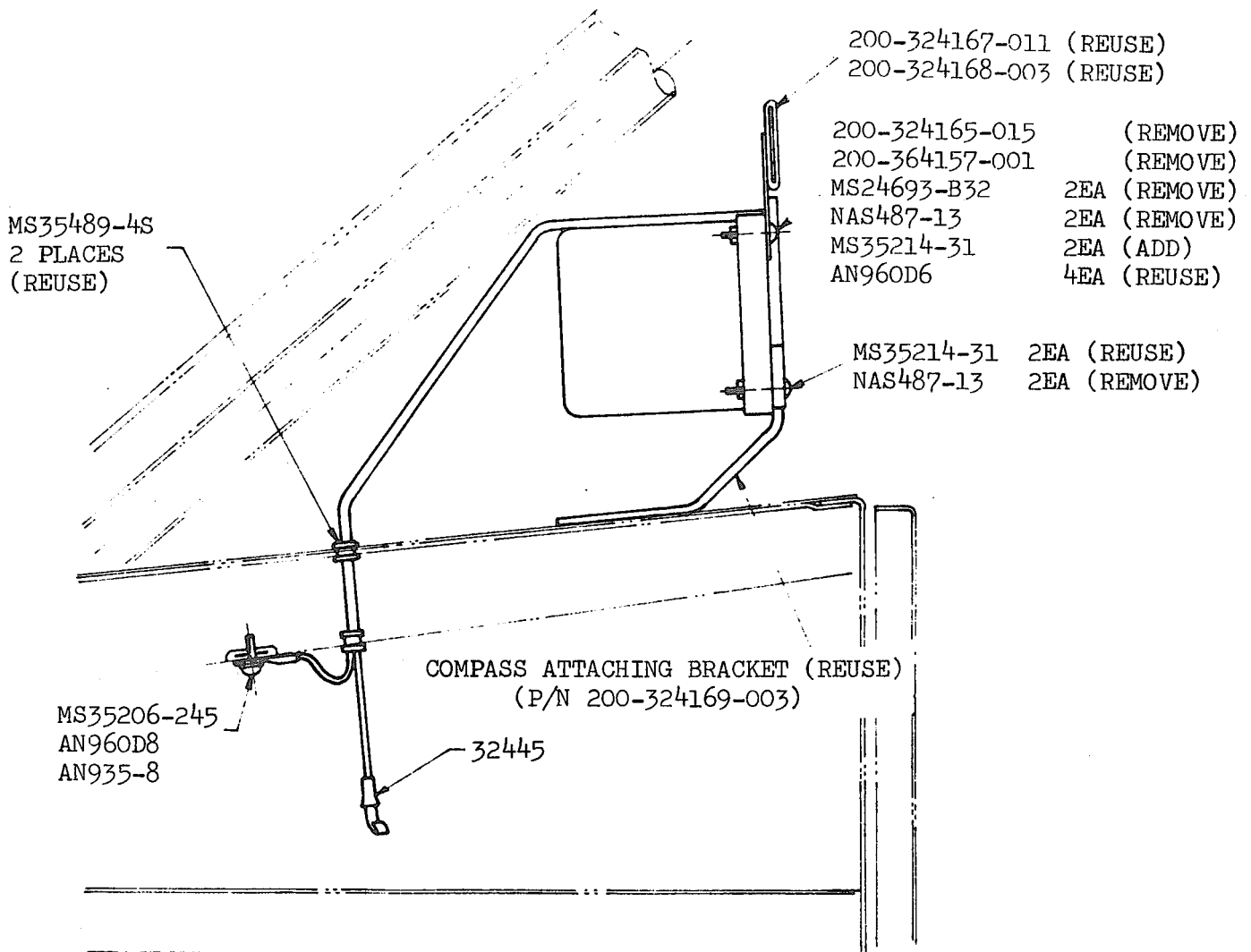
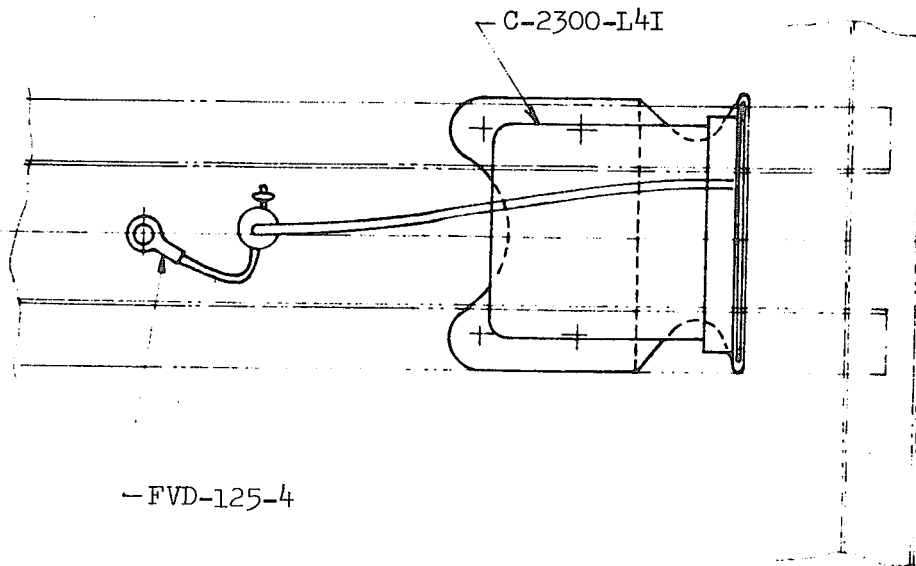


FIGURE 2. INSTALLATION OF C-2300-L4I MAGNETIC COMPASS (REFER TO PART II)

FAN - 029